



CSL: Core Interests & Collaboration

**Dr Priscilla Hong,
Manager,
Research Innovation**

Legal Notice

The information provided in this document is provided “as is” without warranty of any kind; either express or implied, and is intended for informational purposes only. The information contained herein is subject to change at any time without notice. In no event shall CSL Limited be liable for any direct, indirect, special or consequential damages or any damages whatsoever resulting from loss of use, data, or profits arising out of or in connection with the use of this information. All rights reserved. All trademarks mentioned herein belong to their respective owners.

CSL at a Glance

35+ 

Countries of operations
around the world

US\$10.3 

Billion in annual revenue

US\$4.1 

Billion in R&D investments in the last
5 years to advance product pipeline

25,000+ 

Employees around the world

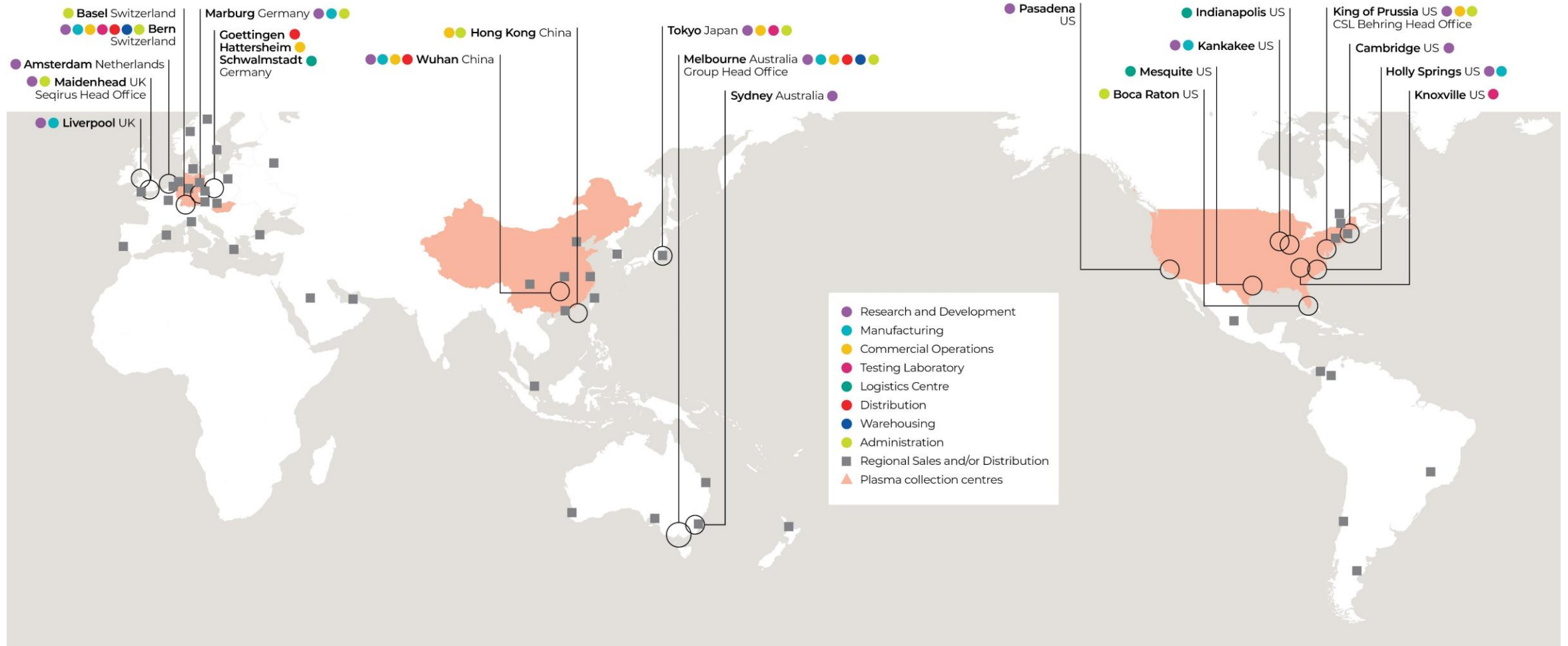
1700+ 

R&D employees

300+ 

Plasma collection centres across
China, Europe and North America

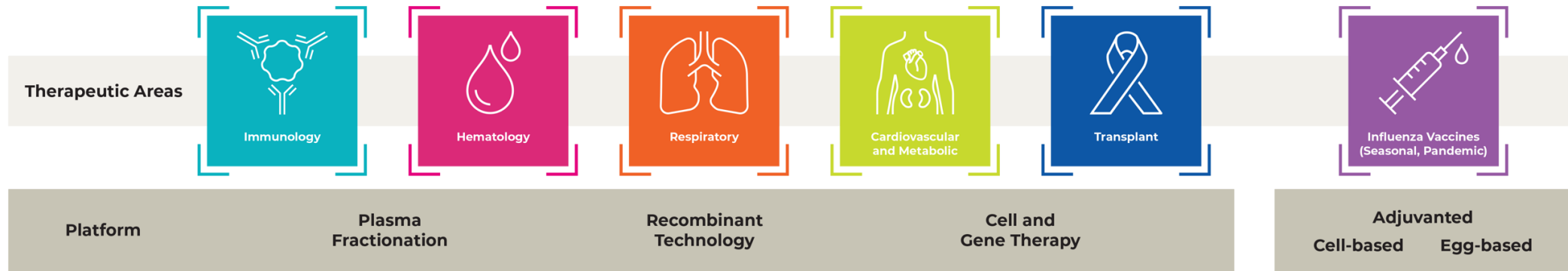
Our Locations



Top 25 Biotech Companies of 2022

Rank	Company	Ticker Symbol	Market Cap (US\$ Billion)
1	Novo Nordisk	NOVO-B (CPH)	236.0
2	Thermo Fisher Scientific	TMO (NASD)	213.4
3	Amgen	AMGN (NASD)	130.8
4	CSL Ltd	CSL (ASX)	92.2 B
5	Gilead Sciences Inc	GILD (NASD)	77.6
6	Regeneron Pharmaceuticals Inc	REGN (NASD)	67.4
7	Vertex Pharmaceuticals	VRTX (NASD)	61.5
8	Moderna	MRNA (NASD)	58.7
9	Chugai Pharmaceutical	4519 (JPX)	52.6
10	Illumina	ILMN (NASD)	50.9
11	Lonza	LONN (SWX)	49.2
12	WuXi AppTec	603259 (SHSE)	47.9
13	Samsung Biologics	207940 (KRX)	42.2
14	Agilent Technologies	A (NYSE)	40.3
15	Jiangsu Hengrui Medicine Co Ltd	600276 (SHSE)	40.1
16	BioNTech SE	BNTX (NASD)	33.4
17	WuXi Biologics	2269 (HKG)	33.3
18	Biogen	BIIB (NASD)	30.8
19	Sun Pharmaceutical Industries	SUNPHARMA (NSE)	26.1
20	Seagan	SGEN (NASD)	23.9

CSL's Core Therapeutic Areas (TAs) & Platforms





Immunology

Key Products & Pipeline

Privigen® (10% intravenous Ig)
Primary immunodeficiencies (PID),
Chronic inflammatory demyelinating
polyneuropathy (CIDP)

Hizentra® (20% subcutaneous Ig)
PID, CIDP
Dermatomyositis (DM), Ph III
Systemic sclerosis (SSc), Ph II

Haegarda® (C1 Esterase Inhibitor)
Hereditary angioedema

Garadacimab (Anti-FXIIa mAb)
Hereditary angioedema, Ph III

CSL324 (Anti-G-CSFR mAb)
Hidradenitis suppurativa (HS), Ph I

CSL730 (Recombinant Trivalent
Human IgG1 Fc Multimer), Ph I

Gene Therapy Treatments

PID, Research

Core Interests

Immune deficiencies
(PID gene therapy and targets)

Autoimmune diseases (AIDs)
(e.g. Primary Sjögren's syndrome;
SSc; idiopathic myositis incl.
DM, polymyositis and others;
autoimmune blistering diseases)

Therapeutic strategies for AIDs

- Novel immunomodulatory strategies targeting cytokines, chemokines, modulatory proteins and TNF-family members
- B cell depletion / regulation strategies

Alternatives to plasma-derived Ig / Recombinant IVIg



Hematology

Key Products & Pipeline

Idelvion® (Recombinant FIX-FP)
Hemophilia B

Afstyla® (Recombinant FVIII)
Hemophilia A

Kcentra® (Prothrombin complex concentrate)
Urgent warfarin reversal

EntranaDez (AAV FIX gene therapy)
Hemophilia B, Ph III

CSL889 (Hemopexin)
Sickle cell disease, Ph I

CSL888 (Haptoglobin)
Sub-arachnoid hemorrhage, PC

Core Interests

Hemorrhagic stroke

- Novel biologic targets/therapeutics or strategies to understand pathomechanisms
- Biomarker/Omics approaches for patient stratification and drug discovery

Acute thrombosis (pulmonary embolism, acute ischemic stroke)

Novel therapies / approaches for targeted fibrinolysis / thrombolysis with increased efficacy and safety

Sickle cell disease

Prophylactic therapies to reduce vaso-occlusive crises and chronic vasculopathy



Respiratory

Key Products & Pipeline

ZEMAIRA®/RESPREEZA® (Alpha 1 Antitrypsin)

Garadacimab (Anti-FXIIa mAb)
Idiopathic Pulmonary Fibrosis, Ph IIa

CSL311 (Anti- β -common mAb)
Airways inflammation, Ph I

CSL787 (Nebulised Ig)
Respiratory infections, Ph I

Core Interests

Asthma
(severe, uncontrolled)

Chronic obstructive pulmonary disease
(exacerbations)

Non-cystic fibrosis bronchiectasis

Interstitial lung diseases
(progressive fibrosing)

Community acquired pneumonia (CAP)-associated complications
(acute respiratory distress syndrome, sepsis, acute kidney injury)



Cardiovascular and Metabolic

Key Products & Pipeline

CSL112 (ApoA-1)
Acute coronary syndrome, Ph III

CSL346 (Anti-VEGFB mAb)
Diabetic kidney disease, Ph II

Core Interests

Myocarditis

Rare lipid disorders
(e.g. familial hypercholesterolemia,
familial chylomicronemia)

Severe forms of atherosclerosis
(role of inflammation)



Transplant



Key Products & Pipeline

CSL964 (Alpha 1 Antitrypsin)

Graft versus host disease, Ph III

Clazakizumab (Anti-IL-6 mAb)

Antibody mediated rejection, Ph III

CSL040 (Novel Complement

Inhibitor), PC



Core Interests

Chronic lung allograft dysfunction

(incl. prevention, ab-mediated rejection, biomarkers, animal models)

Ischemia reperfusion injury

(prevention)

Tolerance

(immunomodulation / tolerance for SOT and HSCT)

Hematopoietic stem cell transplants

(improving efficacy / safety)

Acute and Chronic GvHD

(treatment and prevention)

Cardiovascular allograft vasculopathy

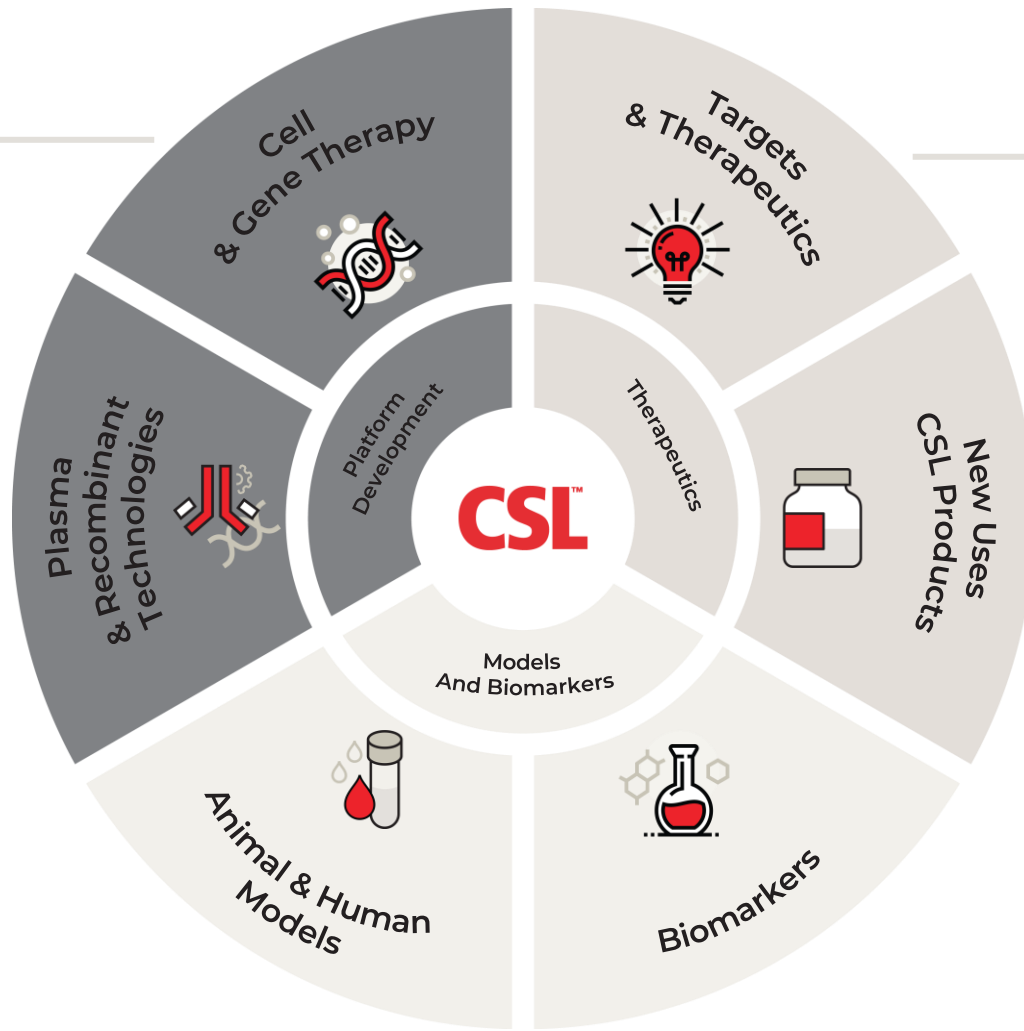
(treatment and animal models)

CSL's Areas of Interest for Collaborations

- Non-viral in vivo delivery of RNPs
- Modulation of transgene expression in vivo
- LV production yield and quality

- Antibodies
- Protein therapeutics
- LV gene therapies
- Cell therapies

- Oral delivery of biologics
- Protein purification technologies
- Bioprocess improvements



Capabilities from Discovery to Patients



Target Discovery



Translational Medicine & Data Science



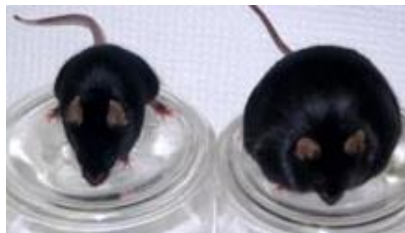
Phase I / II Manufacturing



Patients

THERAPEUTIC PLATFORMS

CLINICAL STUDIES



Animal Models of Disease



Toxicology & Product Development



Phase III / Launch Manufacturing

Benefits of collaborating with CSL



Global capabilities on your doorstep



Work with one of the world's leading biotech companies



Funding for successful proposals



Access to commercial, R&D, clinical, intellectual property, marketing and manufacturing expertise



Accelerate translation of your research to deliver new therapies



>20 new Research Acceleration Initiative partnerships established since 2019



>150 active Research collaborations



225 scientific papers published with our collaborators since 2015

The background of the slide is a microscopic image of several cells. The cells are roughly spherical and have a textured, orange-brown surface. Some cells have a prominent yellowish-green center. The cells are set against a dark red background. A semi-transparent white rectangular box is overlaid on the left side of the image, containing the text.

Research Acceleration Initiative

CSL's Research Acceleration Initiative

Objective: to build relationships with entrepreneurial researchers and fastrack discovery of innovative medicines that address unmet needs

Focus on early stage projects in specific areas aligned with CSL's Therapeutic Areas

Why? Early collaborations with high quality academic partners are key to building a sustainable pipeline

CSL has a strong interest in supporting local medical research efforts and strengthening POC capability in the countries in which we work

- ✓ Successful applicants receive up to AUD 250k p.a. for up to 2 years
- ✓ CSL scientific champions assigned to each project to provide expert, industry guidance



CSL Research Acceleration Initiative

Seeking Expressions of Interest from Research Organisations

CSL is a leading global biotech company that develops and delivers innovative biotherapies to help people living with life-threatening medical conditions live full lives.

CSL's **Research Acceleration Initiative** aims to fast-track discovery of innovative biotherapies through partnerships between CSL and global research organisations. These partnerships provide funding and access to industry experts for scientists working on novel biotherapeutic strategies in CSL's therapeutic areas.

Expressions of interest are sought from Business Development / Commercialisation representatives across global research organisations that wish to participate in the 2022 CSL Research Acceleration Initiative.

The 2022 Research Acceleration Initiative will focus on innovative research projects that address unmet medical needs and are aligned with CSL's **Therapeutic Areas** and scientific **Platforms**:



WHY COLLABORATE WITH CSL?



Global capabilities on your doorstep.



Work with one of the world's leading biotech companies.



Funding for successful proposals.

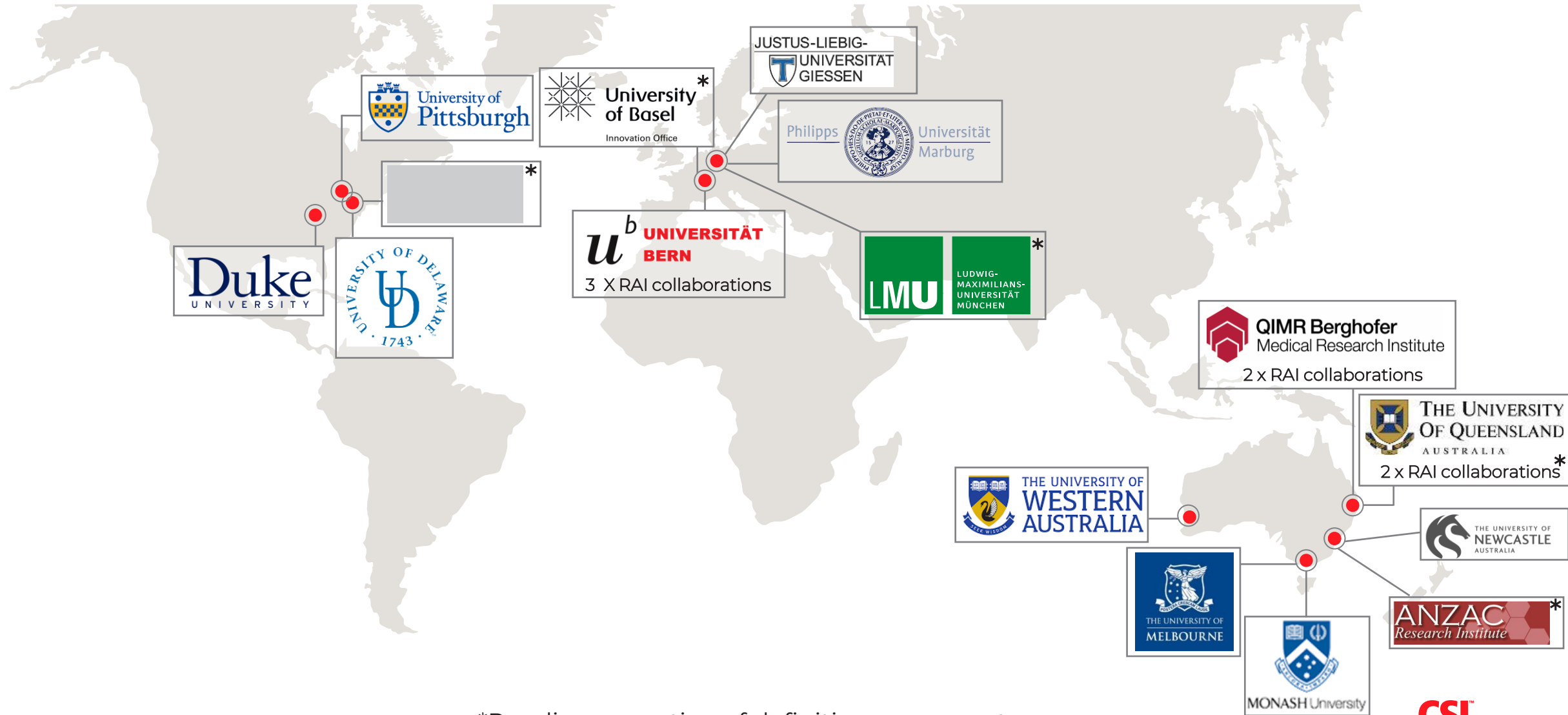


Access to commercial R&D, clinical, intellectual property, marketing and manufacturing expertise.



Accelerate translation of your research to deliver new therapies to patients.

>20 new collaborations funded under CSL's Research Acceleration Initiative since 2019





THANK YOU

Dr Priscilla Hong

*Manager,
Research Innovation*

priscilla.hong@csl.com.au